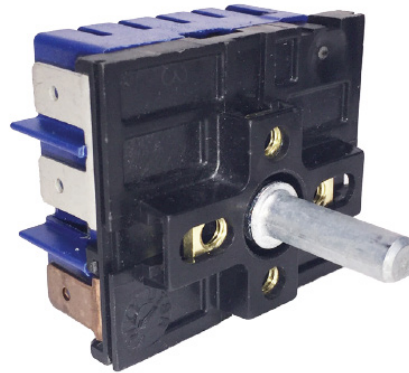


S Series

Infinite Switches



Description

The Robertshaw® S Series Infinite Switch is a rotary switch which controls the power dissipated by a heating element. It is used on electric ranges, hot plates, warming drawers, barbecue grills, space heaters and many more applications which call for proportional control of a resistive load.

Features and Benefits

- Compact design
- Single, dual, or triple outputs
- Multiple mounting configurations and shaft lengths
- Improved performance at Low (Simmer) setting
- Drop-in replacement for Robertshaw M Series Infinite Switches

Specifications

- Ambient temperature rating for continuous duty to 257°F (125°C) with 15 Amp load
- 100 Watts to 3600 Watts @ 240V AC
- Configurations: Single, Dual or Triple Load operations with 3600 Watt maximum
- Pilot Light switching available for an isolated version or a version with one phase combined internally at 0.5 Amps maximum pilot switch current.
- Standard Calibration for Low (Simmer), Duty Cycle of 2% to 9% at 45° arc rotation from Off
- **Operation styles available:**
 - Push-To-Turn
 - Non-Push-To-Turn
 - CW direction from Low to High Duty Cycle
 - CCW direction from Low to High Duty Cycle
- Double Line Break versions are standard; Single Phase switching available.
- Full 360° dial rotation is standard.
- Voltage Ratings: 120V AC, 208V AC, 240V AC
- Agency Certifications: UL File E112536, ENEC 2183653.01 and CE

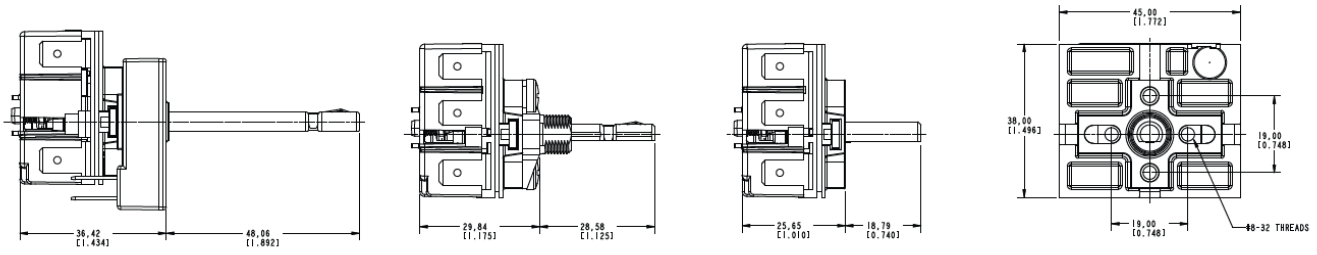


Customer Service
+1 800 304 6563
HVACCustomerService
@robertshaw.com

Technical Service
+1 800 445 8299
TechnicalService
@robertshaw.com

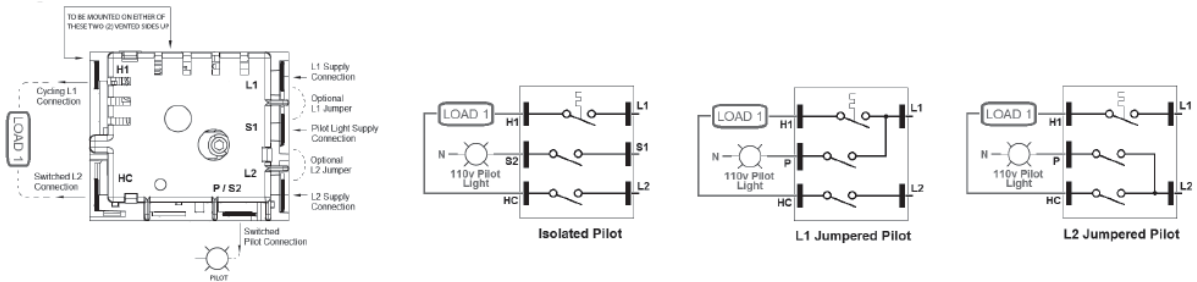
www.robertshaw.com
©2024 Robertshaw
05/24 150-2913 RevB

Product Drawings

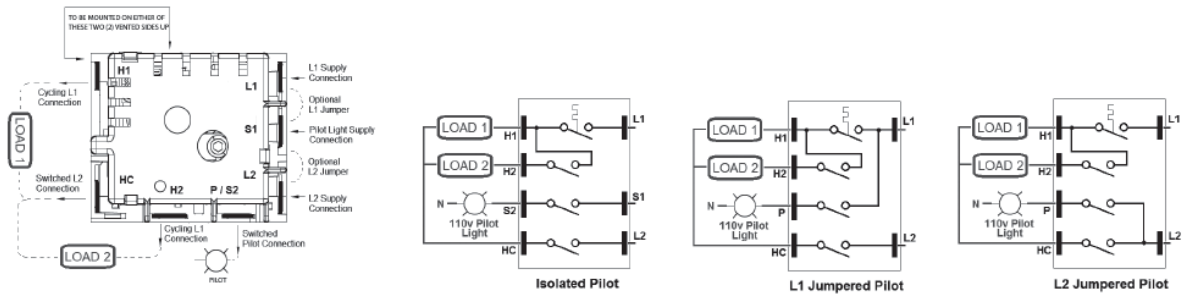


Electrical Drawings

Single Load



Dual Load



Triple Load

