

UNIVERSAL ELECTRONIC THERMOSTAT SERIES

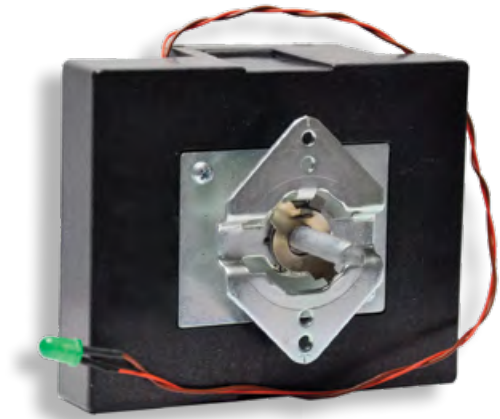
The Robertshaw® Universal Electronic Thermostat Series is designed with OEM programmable settings for use in cooking and heating applications with a need for high accuracy.

Features and Benefits

- Flash microcontroller based design
- Programmable temperature range with $\pm 5^{\circ}\text{F}$ ($\pm 2.5^{\circ}\text{C}$) accuracy throughout the entire range
- Programmable offset and hysteresis parameters
- Adjustable dead zone from OFF position to first set point and adapts with existing knobs, temperature scales and graphics
- Diagnostics include "open sensor circuit" or "no heat" fault conditions
- On board diagnostics with flashing LED output
- Compatible with J, K thermocouples or RTD sensors
- Optional pilot LED
- Robust mechanical shaft assembly
- Backwards compatible with electromechanical thermostat
- Includes PC based configuration tool to custom configure the Universal Electronic Thermostat settings for unique appliances

Specifications

- Ambient temperature range: -4°F to 221°F (-20°C to 105°C)
- Temperature range: 90°F to 750°F (32°C to 399°C)
- Universal AC power: 90 to 265V AC, 50/60 Hz
- One relay output: 13.5 Amps @ 120V AC or 240V AC
- Sensor Inputs
 - Thermocouple J or K
 - RTD (Resistance Temperature Device)
- Mechanical
 - Footprint: 3.6" x 2.9" x 1.6" (91mm x 74mm x 41mm)
 - Mounting: Backward compatible with other electromechanical thermostats
 - Mechanical stops
- Communications
 - TTL RS232 interface
- Agency Certifications:
 - CE
 - IEC Standard 60730
 - UL File E110428



Applications



Range



Convection Oven



Griddle



Fryer



Pizza Oven



Coffee Brewer

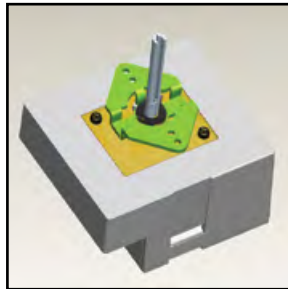


UNIVERSAL ELECTRONIC THERMOSTAT SERIES

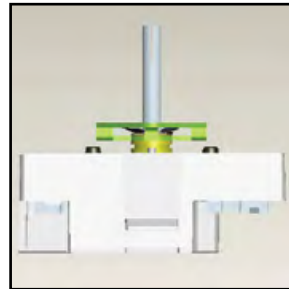
STANDARD MOUNTING CONFIGURATION



Back View



Front View



Side View

PROGRAMMING TOOL



Product includes a PC based configuration tool with user friendly interface.

- Windows compatible
- Configurable temperature profiling from PC
- Programmable for C° or F°
- Adjustable hysteresis down to 1°F increments
- Adjustable sensing device offset
- Displays set temperature, sensing device temperature and oven temperature
- Data logging function
- User selectable input for J, K thermocouples or RTD sensors
- Temperature settings from 90°F to 750°F (32°C to 399°C)

REQUIRED HARDWARE

- Power - an AC connector using a Molex 39-01-3022 connector shell and Molex 3-00-0046
- Relay output terminals - 1/4" female terminal
- A Temperature sensing device
 - Type J or K thermocouple and 1/4" female terminal
 - 1,000 ohm platinum RTD Molex 50-57-9402 housing and Molex 16-02-0102
- An optional LED - JST connector housing PAP-02V-S and crimp sockets - SPHD-002T-PO.5
- Two #6-32 machine screws for mounting